

Nelson Central CAFES, BARS & RESTAURANTS

Keeping you well fed and hydrated
during your stay



Nelson Cafés

All cafes listed are within 1km from Rutherford Hotel Nelson in the Nelson CBD and have indoor and outdoor dining. These are recommendations for *breakfast, brunch and lunch*.

Ruby's Espresso

Enjoy the view of the Nelson marina whilst perched at a picnic table or sunk into a bean bag. Delicious daily-made sweet and savoury cabinet food, toasties, Duck Island ice cream and hot and cold drinks. Open 7 days until 4pm. *Note this café is located at the marina, 2km from Rutherford Hotel Nelson.*

River Kitchen

Situated on the banks of the Maitai River, find a chair on the riverside terrace in the sun or find a cosy seat inside. Full a la carte menu serving breakfast and lunch plus sweet and savoury cabinet food.

Suter Café @ The Suter Art Gallery

Set in the beautiful Queen's Gardens overlooking ducks swimming in the pond, the manicured rose garden and 100+ year old Redwood trees towering above. Gourmet food with gluten or dairy free, vegetarian or vegan options. Cabinet or menu food available. Peruse the Suter Art Gallery and onsite gift shop.

Red Art Gallery & Café

Local treats abound here whether in the café or the gallery. Sip coffee or the best homemade chai in town and indulge in a sweet/savoury treat or Al Browns Best Ugly Bagels with a variety of fillings on offer. Then wander the gallery and pick up locally made gifts for yourself or a friend.

Comida Café & Restaurant

Espresso and wine bar. Enjoy cabinet food, cooked breakfast, hot and cold lunch options as well as wood-fired pizza. Take home some tasty treats or foreign wine and cheese from the attached Prego Mediterranean Foods shop.



Nelson Cafés

All cafes listed are within 1km from Rutherford Hotel Nelson in the Nelson CBD and have indoor and outdoor dining. These are recommendations for *breakfast, brunch and lunch*.

Broccoli Row

With a focus on vegetarian and seafood dishes this café never disappoints. They feel you should eat what makes you happy so in essence they're serving up joy. Open weekdays only.

Little Dove Café

Handmade soul food inspired by the kitchens of the eastern Mediterranean. Unique treats that you won't find anywhere else in Nelson. After you've refueled step into the Bill Burke Gallery next door.

Lambretta's Café & Bar

Whether you want a quick coffee, something sweet, all day breakfast menu, lunch or a glass of wine, cold beer and a snack with friends, it's all here.

Deville Café & Bar

Superb covered an uncovered outdoor seating in lush garden surroundings. This is a licensed café that sources locally grown produce from the sunny Nelson Tasman region.

Sweet As Café

Wonderful outdoor seating under a canopy of trees. Enjoy cabinet and menu food for breakfast, morning tea and lunch complemented by a wide range of alcoholic and non alcoholic beverages.

Sublime Brew Bar

A funky café at the roastery serving filter coffee. A great selection of Chemex, siphon, AeroPress and filter coffee. Also serving milkshakes and soft serve ice cream. Picnic tables drenched in sun.



Nelson Cafés

All cafes listed are within 1km from Rutherford Hotel Nelson in the Nelson CBD and have indoor and outdoor dining. These are recommendations for *breakfast, brunch and lunch*.

Pomeroy's Coffee & Tea

Award winning coffee roasters, roasting coffee from around the world and also known for their huge range of high quality tea. Both beans and leaves can be bought onsite for you to take home. The café also sells a wide range of equipment so you can make your own brew at home. Located near the Nelson Saturday Market it's a great place to sit down for a cuppa.

The Baker's Coffee Shop

Step into this European bakery-cafe with traditional European pastries and ambience. Their hugely popular croissant aux amandes sell out daily so get in early. There are many other European-inspired cabinet treats and delights.

Victus Coffee & Eatery

This colourful café occupies a bright, inviting space with fresh food and top notch coffee. Menu and cabinet food available. A great space to park up with your laptop for a few hours. Catch your daily dose of Vitamin D in the sunny outdoor seating area.

Hardy Street Eatery

They create an atmosphere that's similar to eating at home - serving creative, seasonal and approachable food from a regularly changing menu, complimented by good alcohol and coffee.

Yaza Café

An iconic, cosy café pleasing the local and travelling community since last millennium. Set on the edge of the Nelson Saturday Market it's a welcome place to rest your feet after a morning browsing. They are reputed for their delicious scones baked fresh onsite.



Nelson Cafés

All cafes listed are within 1km from Rutherford Hotel Nelson in the Nelson CBD and have indoor and outdoor seating. These are recommendations for *coffee/tea with light cabinet snacks*.

Halifax Café

A bright, spacious café offering breakfast, brunch, lunch and afternoon tea. Walk through to Nood retail store next door.

Qualitea Cafe

Here they spoil you with choice for bubble tea - milky, fizzy, or just delicious tea. They also serve coffee, sweets and real fruit ice cream.

Melrose Café

Located in the historic Melrose House set amongst the manicured gardens and circa 1890 redwood trees it's an impressive setting. Plentiful seating inside and in the gardens. Famous for their decadent afternoon high tea (bookings essential).

Tozetti Café & Bakery

A reputable café with a wide and varied all-day menu, friendly staff and convenient location.

Hattie's Café

Minimalist café open for breakfast and lunch with cabinet and menu food.

8 Plates

Licensed with great plates and a seasonal menu that changes regularly. Delightful, nature-inspired outdoor dining area.



Nelson Restaurants

Trafalgar Street is 200m from Rutherford Hotel Nelson and is the main street of town. There are many dining and shopping options along this street and its side streets. The following restaurants are all located at the Top of Trafalgar Street closest to Rutherford Hotel Nelson and the iconic Nelson Church steps that lead up the hill to the landmark Christ Church Cathedral. The steps were constructed in 1912 using granite from the nearby quarry in Tonga Bay.

Hawker House and Bar

Serving bites inspired by South East Asian street food and hawker markets. Plenty of indoor and covered outdoor seating. Vege is hand-picked and harvested by owner Matt from his local farm.

Hopgoods

This award-winning restaurant is consistently rated one of the top restaurants in Nelson. Modern, locally and seasonally based bistro style food in a casual environment. Reservations highly recommended.

Lombardi's Ristorante

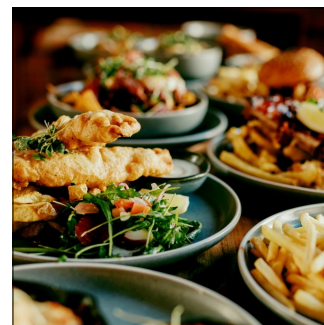
A taste of Italy with local kiwi flavours to give you the best of both worlds. Sunny outdoor dining.

The Vic Public House

A family business that is all about hospitality and creating an environment where everyone is welcome. This family has been pouring pints, serving consistently good pub food and taking excellent care of customers for generations. It's in their DNA.

8 Plates

Set in an iconic historic building, the menu is constantly changing to bring you the best of what's in season. Delightful, nature-inspired outdoor dining area.



Nelson Restaurants

The following restaurants are in the CBD and are an easy, safe walking distance from Rutherford Hotel Nelson.

Tides Bar and Eatery

A romantic dinner for two, family occasion, a wedding anniversary or business entertaining, Tides Bar and Eatery is an exceptional riverfront dining experience.

Wafu Bistro

Authentic Japanese food prepared by Yuki Takeoda. Superb sake on offer to compliment your meal.

Urban Oyster Bar & Eatery

Menu changes regularly to ensure the freshest local, seasonal produce on offer. Oysters are a specialty.

Parts & Service

Light industrial dining space with charcoal-fired inspired food and a well-travelled drink selection. Coeliac friendly.

Arden Bar & Kitchen

A contemporary restaurant, wine and cocktail bar with a casual yet considered style.

Le Plônc

Sincere cooking and integrous neo-French fare though often with a rebellious flair. Seasonal and sustainable food is sourced from farmers and fishermen to showcase the best Nelson has to offer.



Nelson Restaurants

The following restaurants are in the CBD and are an easy, safe walking distance from Rutherford Hotel Nelson.

Nicola's Cantina

Mexican cuisine in the heart of the city. Immerse yourself in the eclectic décor while swilling tequila cocktails. Coeliac friendly.

East St

Making veges sexy since 2010. This is a 100% vegan restaurant. All about healthy food, tasty refreshing drinks and a great atmosphere. Fantastic additional outdoor seating. Coeliac friendly.

Mama San

South East Asian and Vietnamese street food. The menu features fresh, healthy cuisine. Follow the intoxicating aromas as you step into this bright, colourful Asian space.

Green Bamboo

Immerse yourself in authentic Vietnamese culture which is embedded on the walls and throughout the cuisine prepared by chef Anh Phan.

The Buxton

A classic old Public Trust building where delicious food, drinks and good company all come together. Daily specials and 16 beers on tap. The large sunny courtyard is the perfect place to socialise.

Stefano's Pizzeria

Real Italian pizza made by real Italians, baked in a traditional stone oven.



Nelson Waterfront Restaurants

The following waterfront restaurants are located next to each other just 2 kms from the CBD. They all offer outdoor dining with expansive Nelson Haven, Tasman Bay and majestic Mount Arthur views. Their outlooks are especially magnificent at sunset.

The Styx

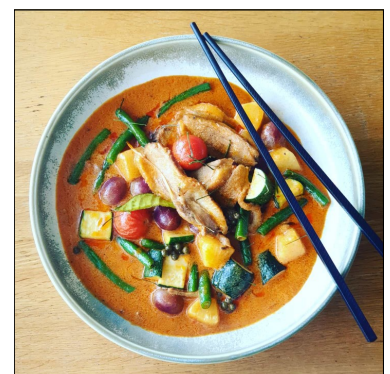
Escape the city and relax next to the ocean. Overlooking the Tasman Sea the sunsets here are gorgeous. Main floor and upstairs seating and plenty of seating on the heated outdoor waterfront deck. Unpretentious, coastal cuisine at its finest.

Nahm

Escape the city Thai with a twist. Balcony seating with heaters and blankets.

Boat Shed Cafe

The cuisine revolves around a seasonally driven menu which celebrates exceptional New Zealand produce every day. Their a la carte menu showcases a combination of premium, sustainably sourced seafood and traceable meats. This restaurant literally hangs over the water.



Nelson Bars

All bars listed are in the CBD and are an easy, safe walking distance from Rutherford Hotel Nelson.

Kismet Cocktail & Whisky Bar

It's all about a great drop and the wall of alcohol on offer is impressive. This is Nelson's largest whisky selection and they specialise in carefully crafted cocktails.

Hawker House and Bar

Inspired by South East Asia this is a superb late night spot at the top of Trafalgar Street, just steps from Rutherford Hotel Nelson.

Urban Eatery

Aside from great craft beer and a modest but outstanding wine list, they serve up a mean cocktail. Share your night on socials with their enormous graffiti painted interior wall as your photo backdrop.

The Free House

A brew pub set in an old church, serving up a multitude of craft beers in a unique setting. There's plenty of heated outdoor seating.

Two Thumb Brewing Co.

Batch brewed by hand these beers show off the wonderful flavours and aromas of locally sourced malts and hops. Big flavour, low impact - the brewery is completely solar-powered, utilizes rainwater catchment and has a state-of-the-art wastewater treatment system.



Nelson Bars

All bars listed are in the CBD and are an easy, safe walking distance from Rutherford Hotel Nelson.

Sprig & Fern Hardy Street

Serving their locally brewed beer and cider. They have 20 craft beers and ciders on tap plus more in bottles, including special Limited Releases. Sunny outdoor seating and live music on the weekends.

The Buxton

Dine - Drink - Dance. Come for dinner and a drink, stay for dancing. The outdoor courtyard is large and sunny.

Red 16

Casual cozy bar in the CBD. Moody, intimate indoor space and sunny courtyard. Originally a Japanese sushi restaurant, rice paper screens and Asian touches are still apparent throughout. Enjoy local wines, beers, hand pull ales and cocktails.

Arden

A contemporary restaurant, wine and cocktail bar. Sit back and relax in the large sheltered courtyard.

The Vic Public House

A great place to watch the game, any game. Plenty of indoor seating and sunny outdoor seating with views to Nelson's iconic Cathedral steps and Cathedral.

